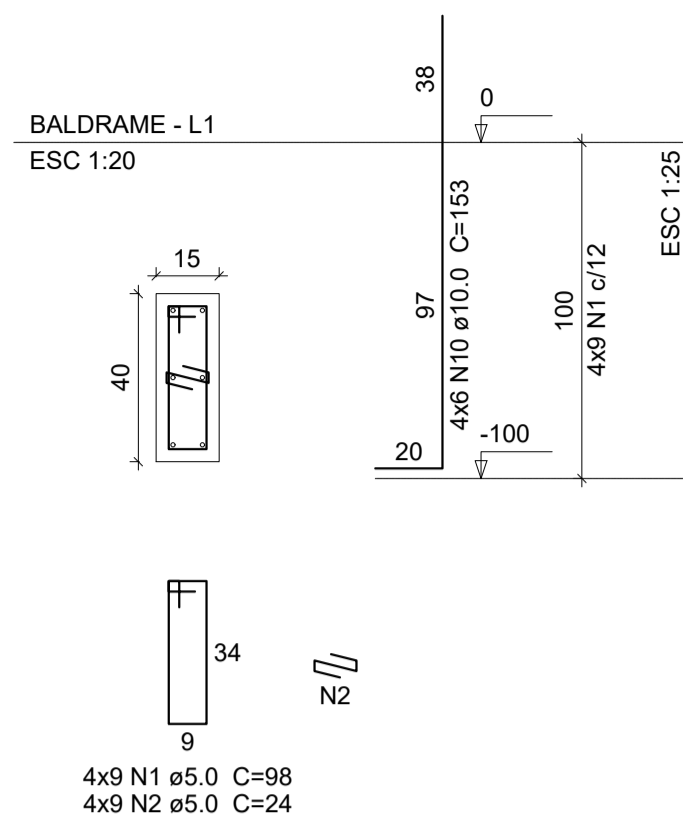
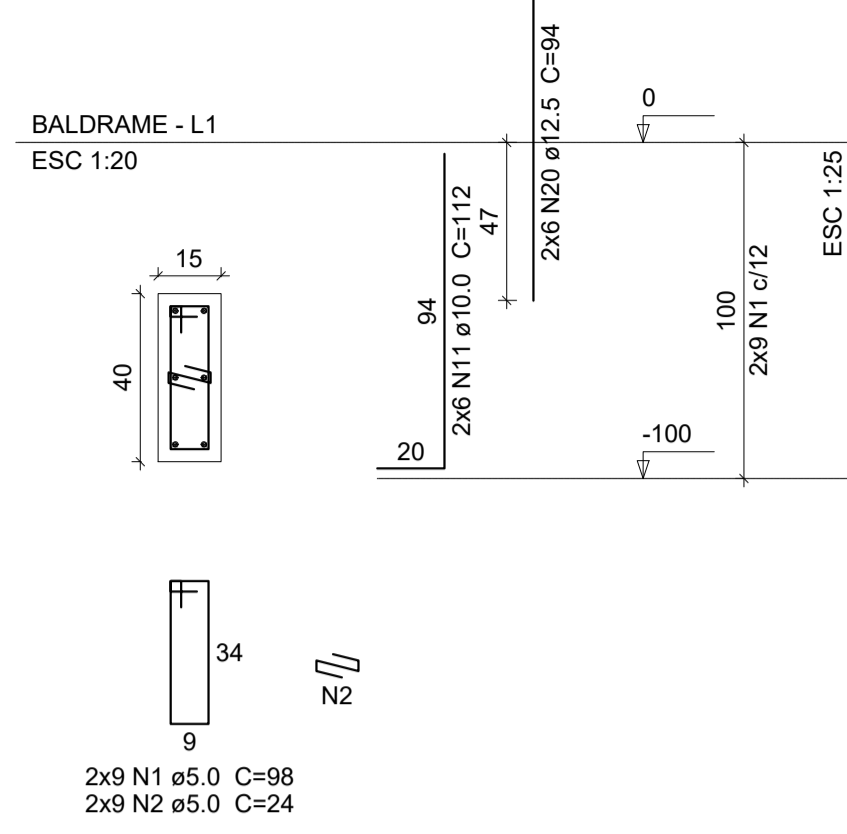


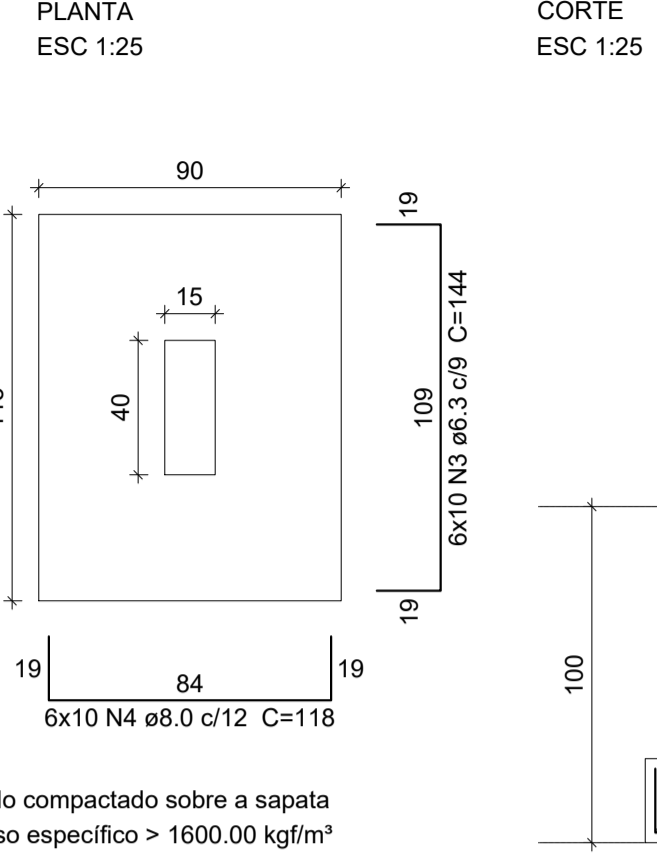
P12=P15=P16=P18



P14=P17

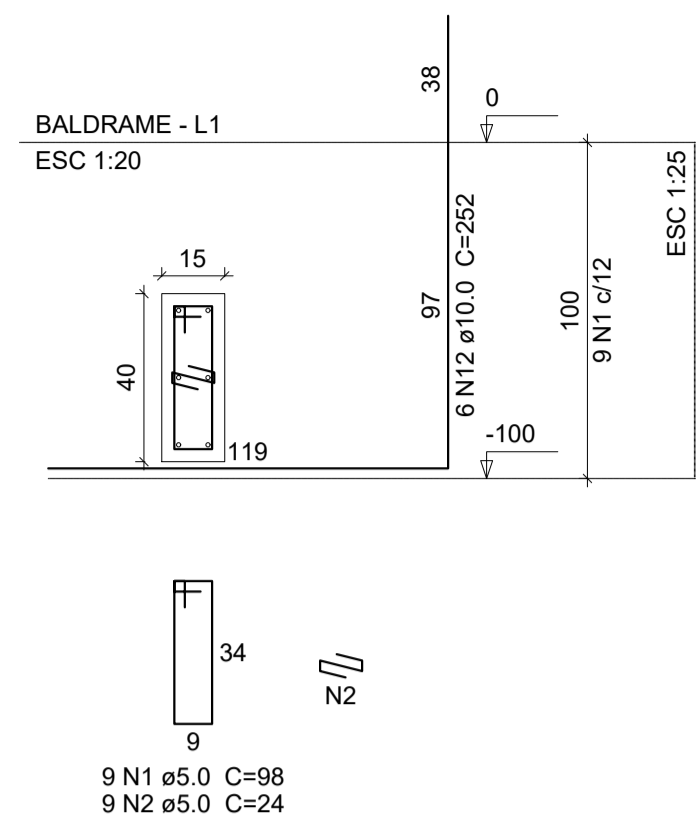


S12=S14=S15=S16=S17=S18

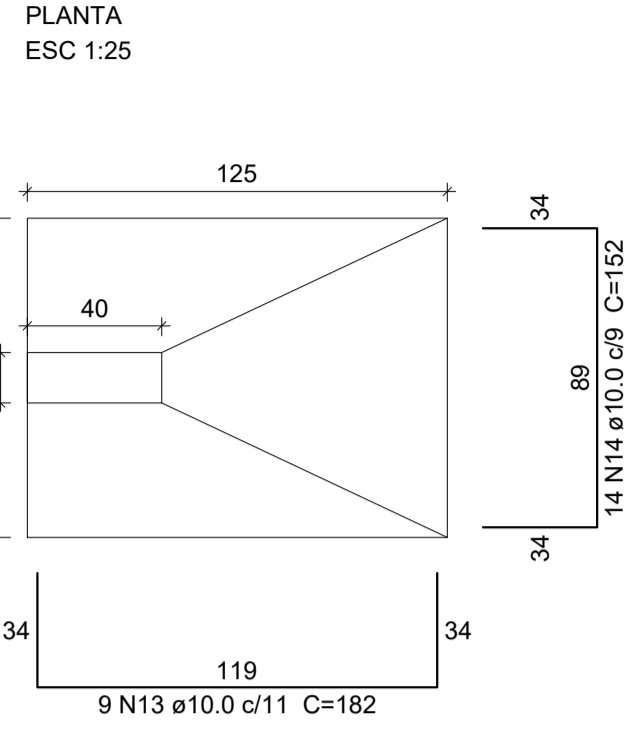


Solo compactado sobre a sapata peso especifico > 1600.00 kgf/m³

P4

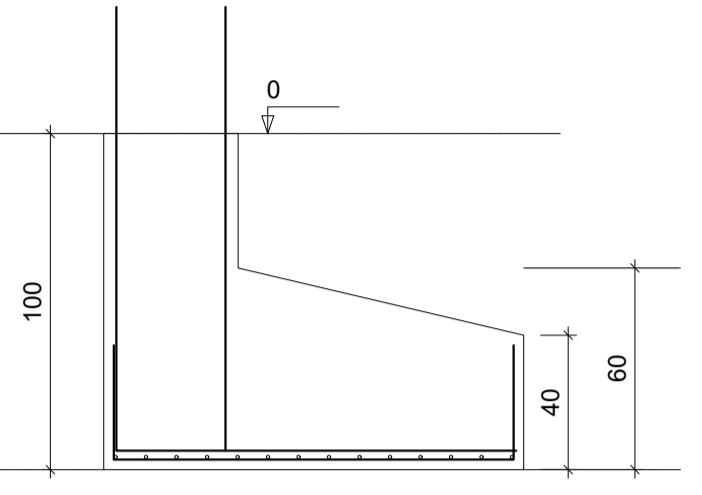


S4



Solo compactado sobre a sapata peso especifico > 1600.00 kgf/m³

CORTE ESC 1:25



Relação do aço

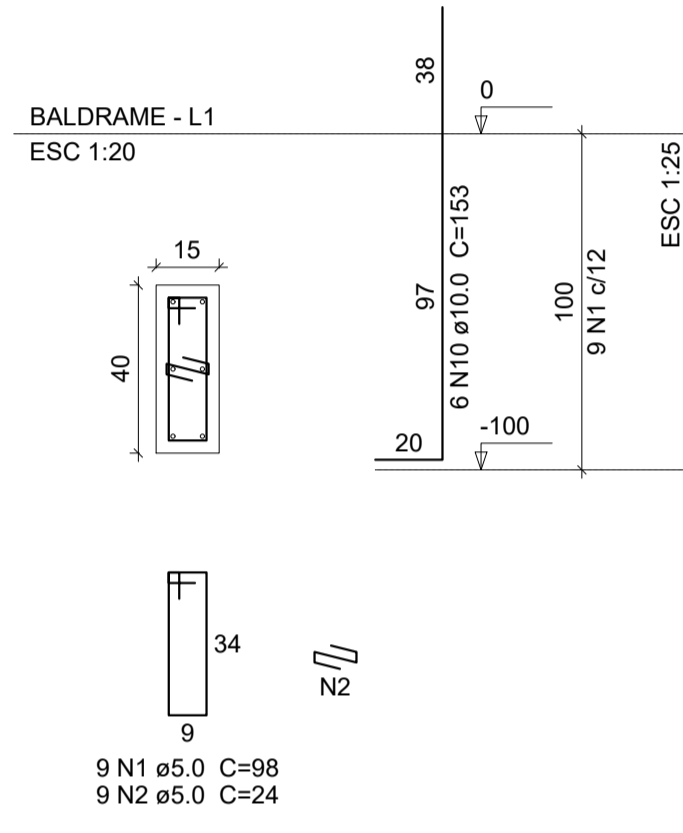
AÇO	N	DIAM (mm)	QUANT (Barras)	UNIT (cm)	C.TOTAL (cm)
CA60	1	5.0	162	98	15876
CA50	2	5.0	162	24	3888
	3	6.3	60	144	8640
	4	8.0	60	118	7080
	5	8.0	56	138	7728
	6	8.0	36	163	5868
	7	8.0	30	118	3540
	8	8.0	18	143	2574
	9	8.0	28	163	4564
	10	10.0	72	153	11016
	11	10.0	12	112	1344
	12	10.0	12	252	3024
	13	10.0	9	182	1638
	14	10.0	14	152	2128
	15	10.0	9	172	1548
	16	10.0	12	147	1764
	17	10.0	12	272	3264
	18	10.0	26	202	5252
	19	10.0	28	137	3836
	20	12.5	12	94	1128
	21	12.5	20	176	3520

Resumo do aço

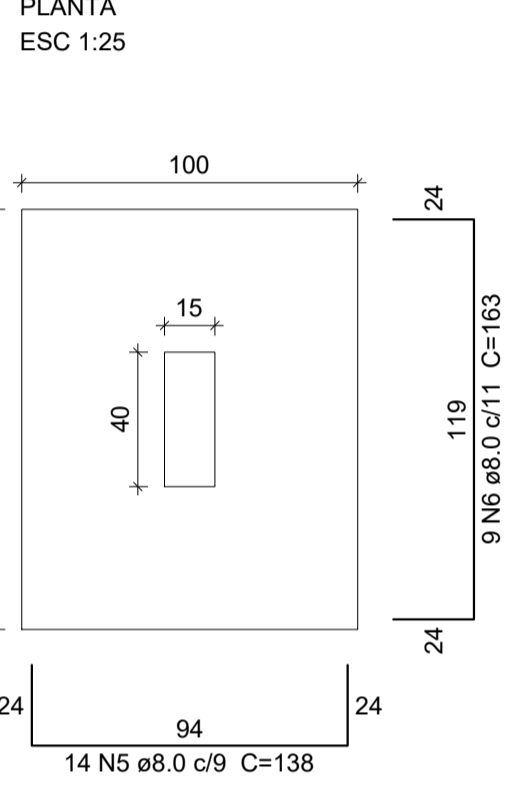
AÇO	DIAM (mm)	C.TOTAL (m)	PESO (kg)
CA50	6.3	86.4	21.1
	8.0	313.6	123.7
	10.0	348.2	214.6
	12.5	46.5	44.8
CA60	5.0	197.7	30.5
PESO TOTAL (kg)			
CA50		404.3	
CA60		30.5	

Volume de concreto (C-25) = 8.79 m³
Área de forma = 43.27 m²

P5=P8=P9=P13

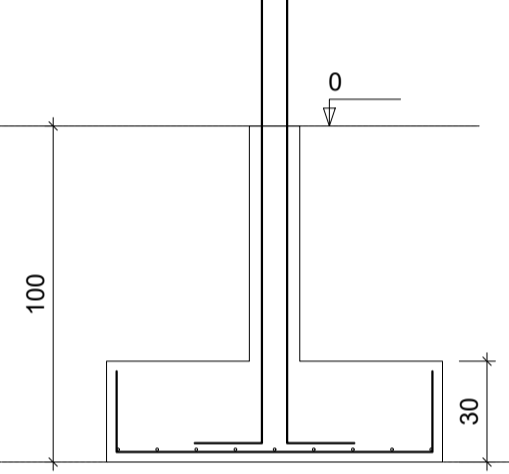


S5=S8=S9=S13

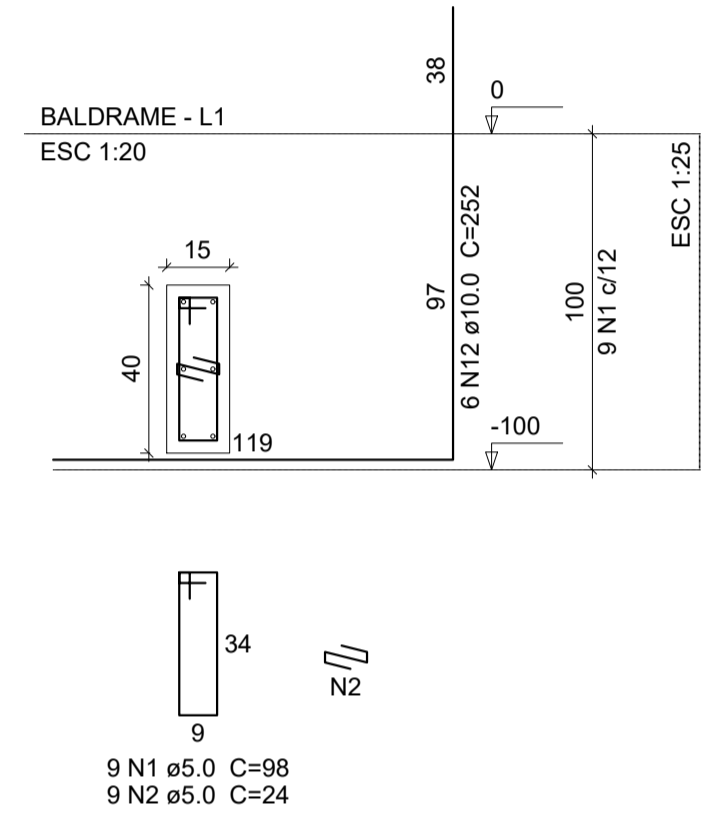


Solo compactado sobre a sapata peso especifico > 1600.00 kgf/m³

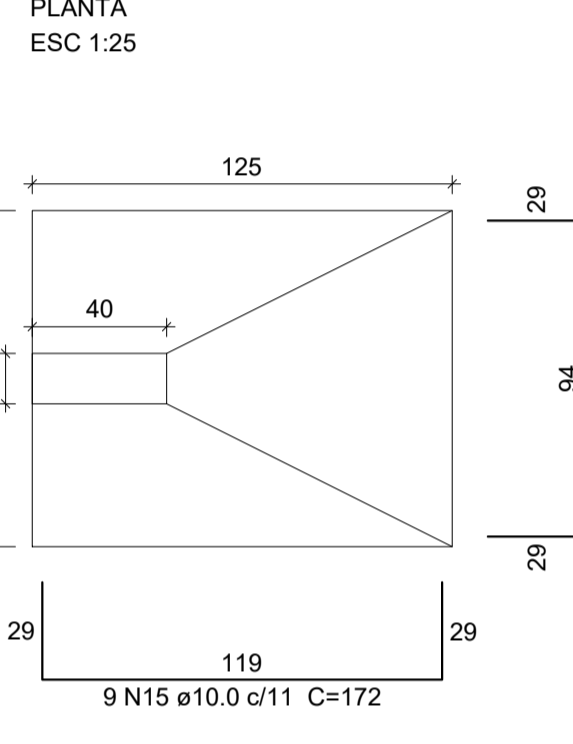
CORTE ESC 1:25



P1

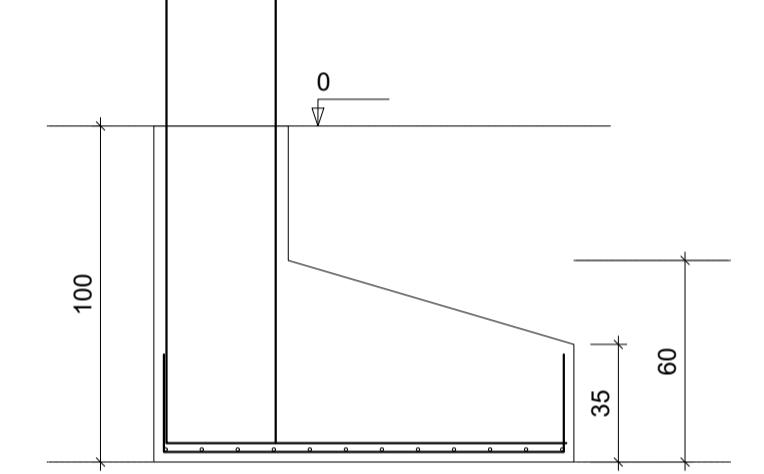


S1

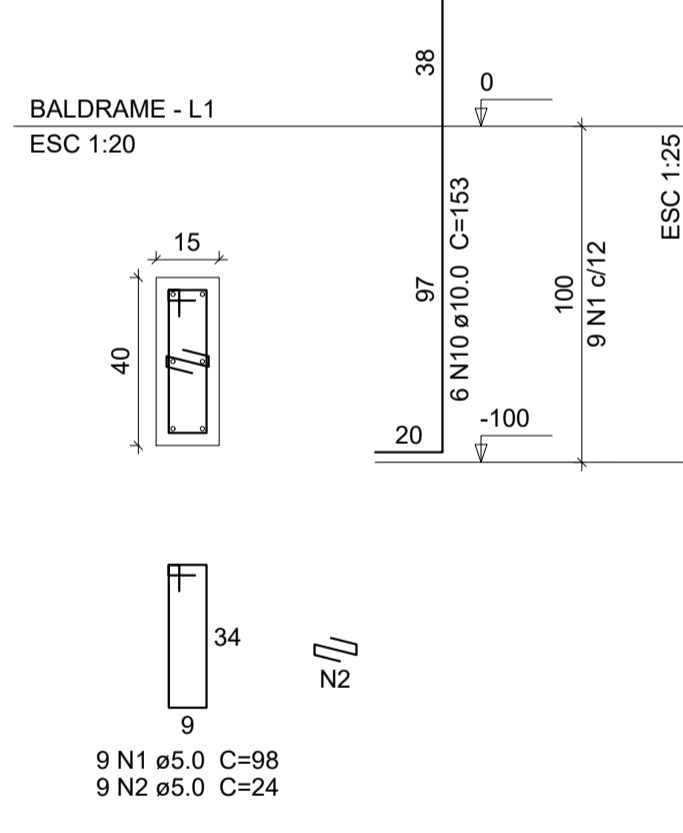


Solo compactado sobre a sapata peso especifico > 1600.00 kgf/m³

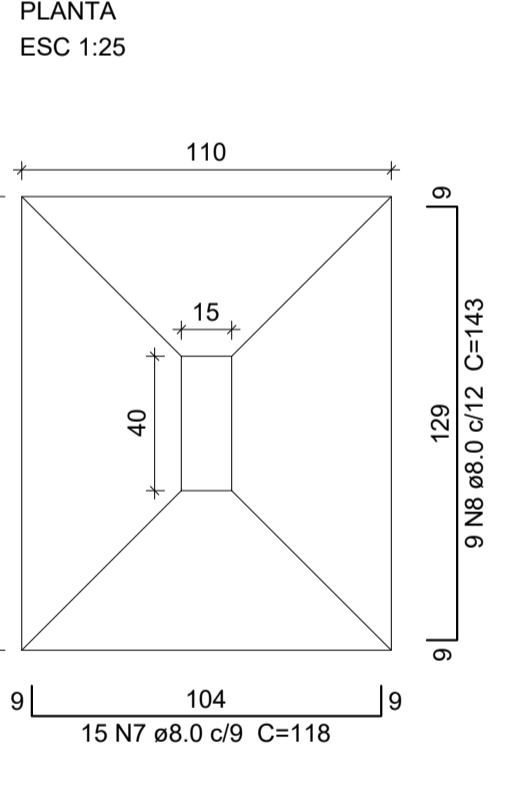
CORTE ESC 1:25



P10=P11

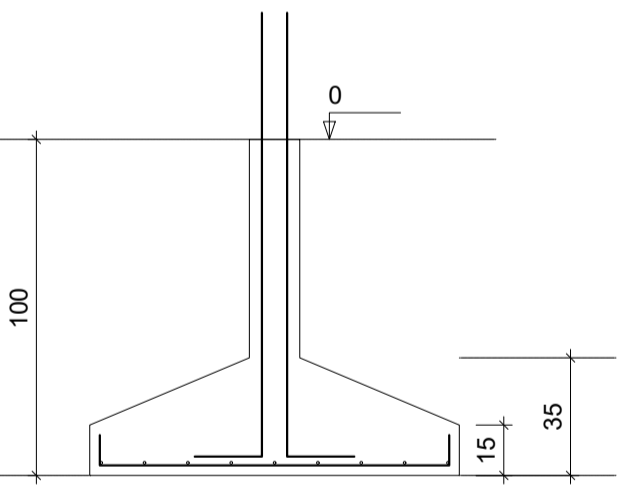


S10=S11

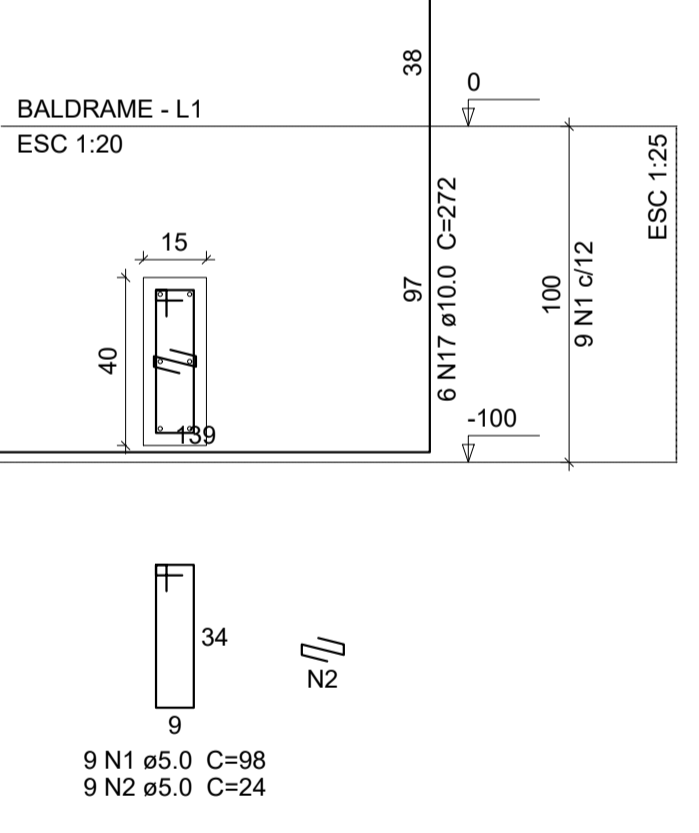


Solo compactado sobre a sapata peso especifico > 1600.00 kgf/m³

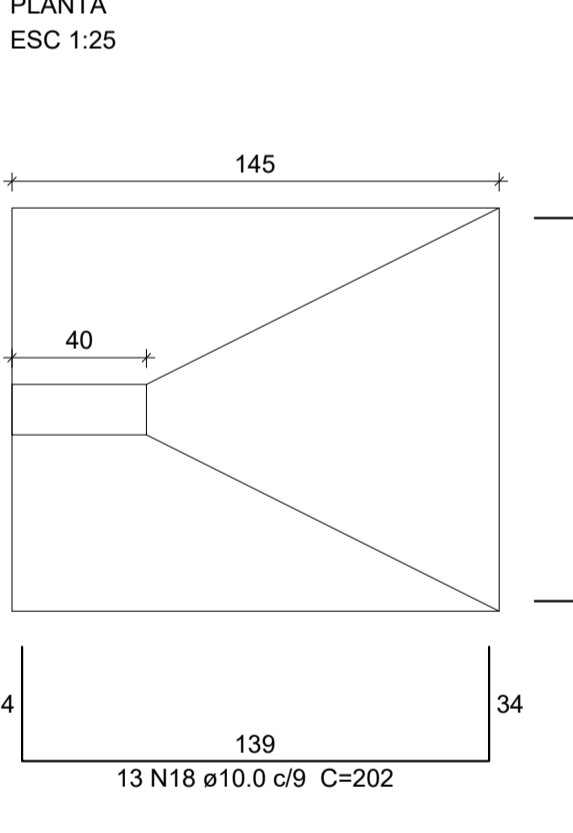
CORTE ESC 1:25



P2=P3

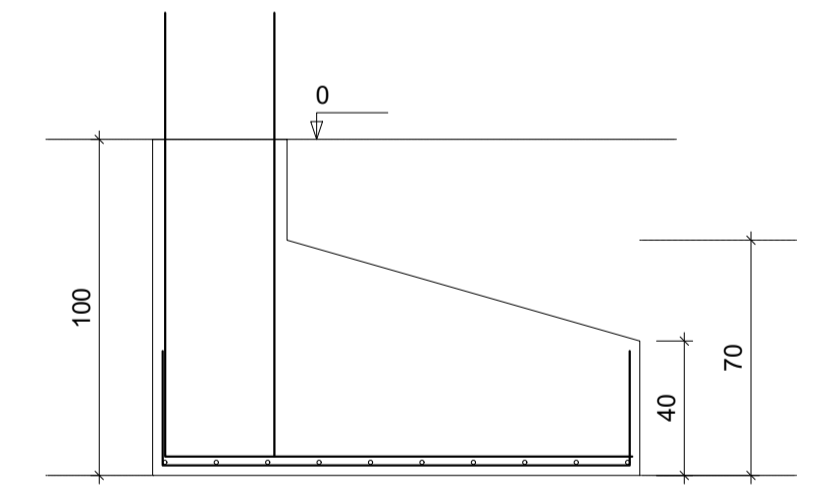


S2=S3

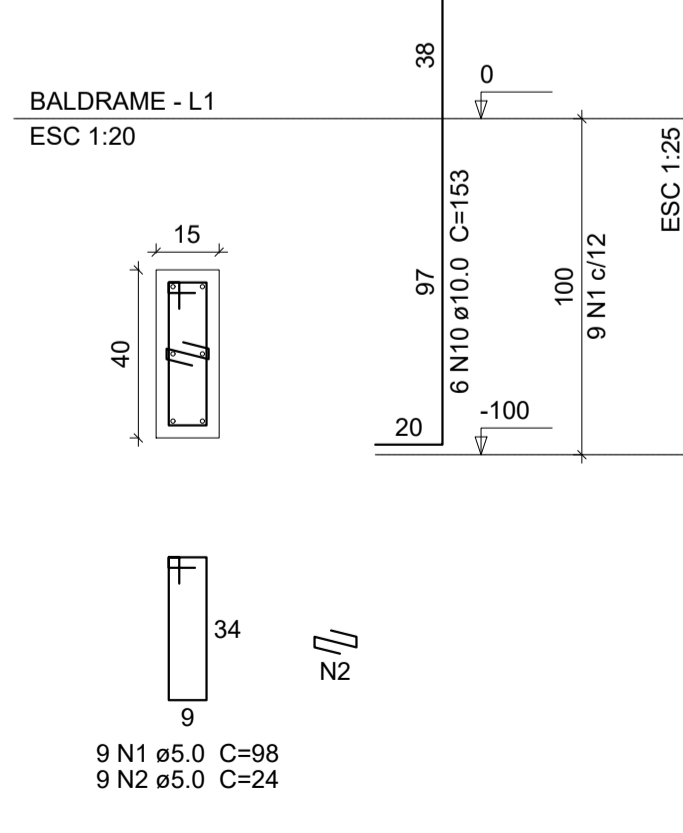


Solo compactado sobre a sapata peso especifico > 1800.00 kgf/m³

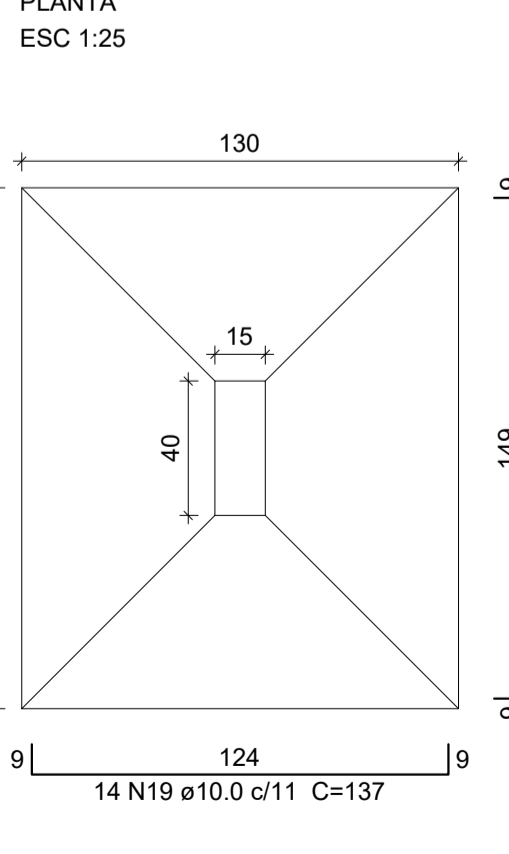
CORTE ESC 1:25



P6=P7

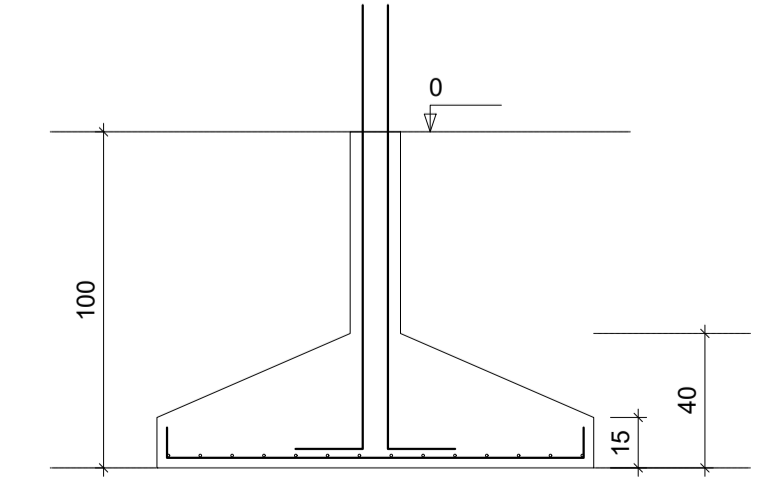


S6=S7



Solo compactado sobre a sapata peso especifico > 1600.00 kgf/m³

CORTE ESC 1:25



DETALHAMENTO SAPATAS E PILARES - FUNDAÇÃO

VOLPI SOLUÇÕES MUNICIPAIS

VOLPI CONSULTORIA E ADMINISTRAÇÃO DE EMPRESAS LTDA
Av. Barão do Rio Branco, 2679 (Edifício Stella Central) - Sala 509
Centro - Juiz de Fora - MG
Fones: (32) 3233-2188 / (32) 9 8806-8543 - Email: volpi_consultoria@yahoo.com.br

Contratante: **PREFEITURA MUNICIPAL PIRAÚBA/MG**

Descrição: **CONSTRUÇÃO DE 04 SALAS, PÁTIO COBERTO, SANITÁRIO E SALA ADMINISTRATIVA NAS ESCOLAS MUNICIPAIS PROJETO ESTRUTURAL - DETALHAMENTO DOS PILARES - FUNDAÇÃO**

Assinatura do Responsável Técnico:	Desenho: Leandro	Escala: Indicada	Responsável pelo estabelecimento:
LEANDRO SANTANA DE SOUZA Engenheiro Civil CREA/MG - 193848/D	Data: 23/07/2021	Formato: A1	ADRIANO CARVALHAES GRAVINA Prelato Municipal
		Prancha: 3/6	