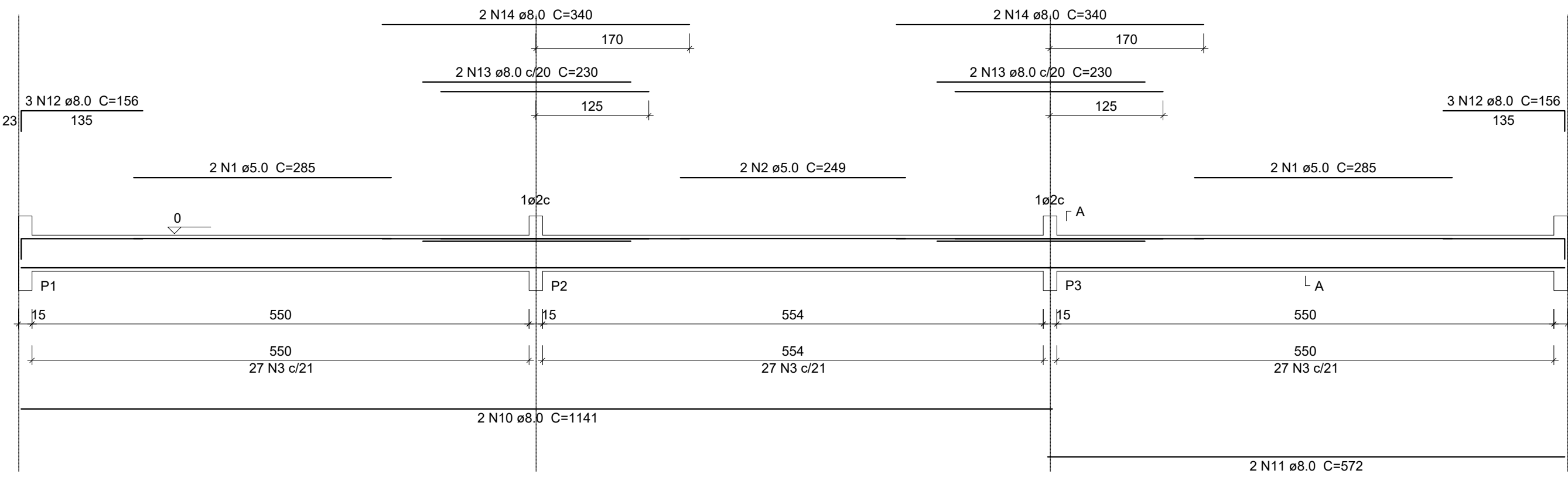
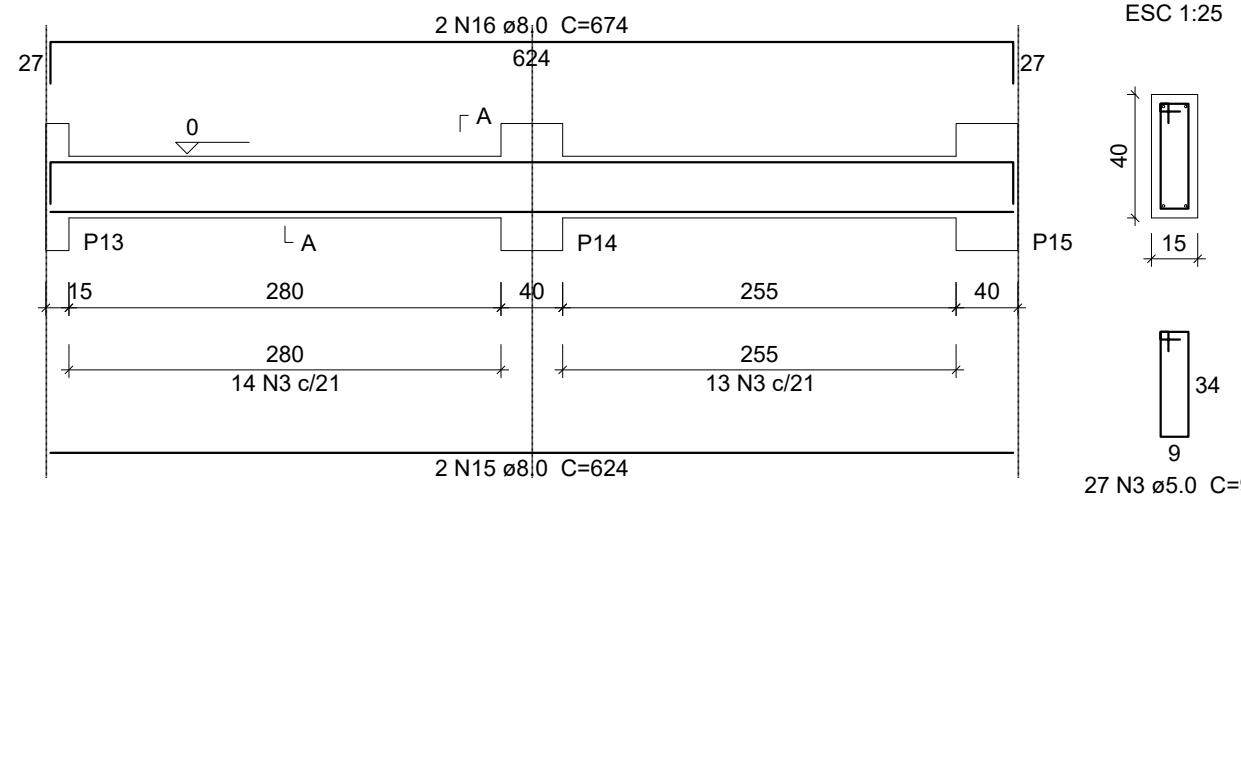


V1
ESC 1:50



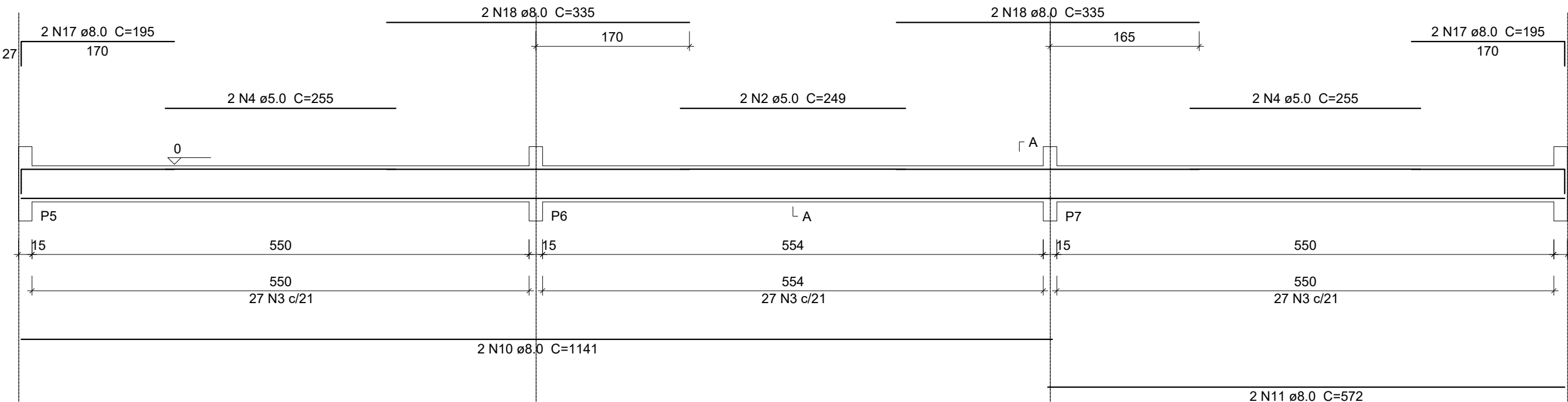
V4
ESC 1:50



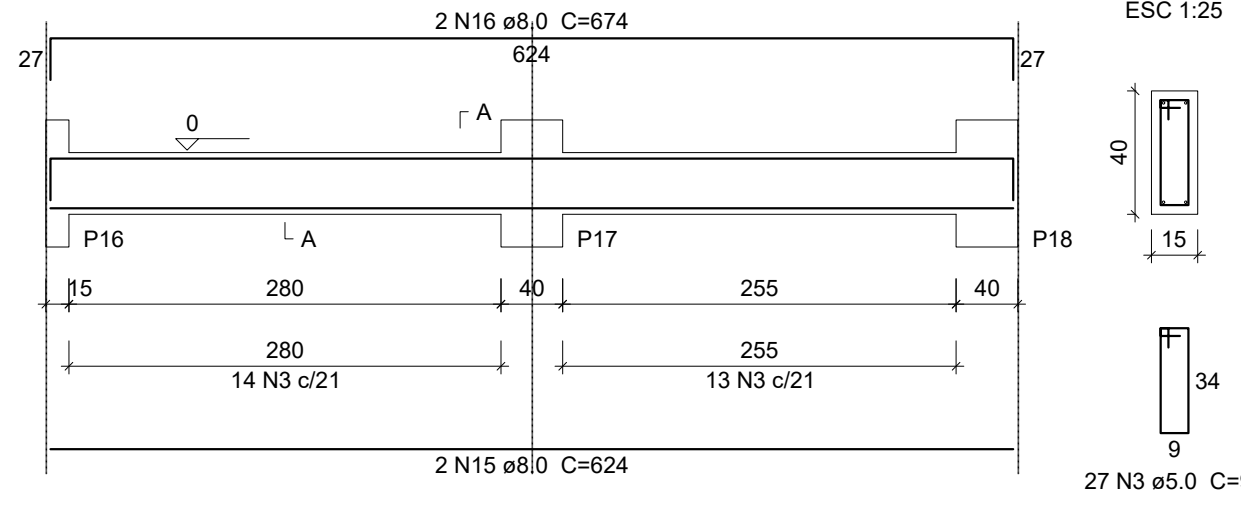
Relação do aço

ACO	N	DIAM (mm)	QUANT (Barras)	UNIT (cm)	C.TOTAL (cm)
CA60	1	5.0	4	285	1140
	2	5.0	6	249	1494
	3	5.0	505	98	49490
	4	5.0	4	255	1020
	5	5.0	2	275	550
	6	5.0	2	295	590
	7	5.0	2	225	450
	8	5.0	2	315	630
CA50	9	6.3	2	126	252
	10	8.0	6	1141	6846
	11	8.0	6	572	3432
	12	8.0	6	156	936
	13	8.0	4	230	920
	14	8.0	4	340	1360
	15	8.0	6	624	3744
	16	8.0	6	674	4044
	17	8.0	4	195	780
	18	8.0	6	335	2010
	19	8.0	6	160	960
	20	8.0	1	155	155
	21	8.0	2	350	700
	22	8.0	2	155	310
	23	8.0	2	870	1740
	24	8.0	2	919	1838
	25	8.0	2	1155	2310
	26	8.0	2	302	604
	27	8.0	1	145	145
	28	8.0	2	205	410
	29	8.0	4	632	2528
	30	8.0	2	438	876
	31	8.0	4	670	2680
	32	8.0	2	564	1128
	33	10.0	2	1110	2220

V2
ESC 1:50



V5
ESC 1:50

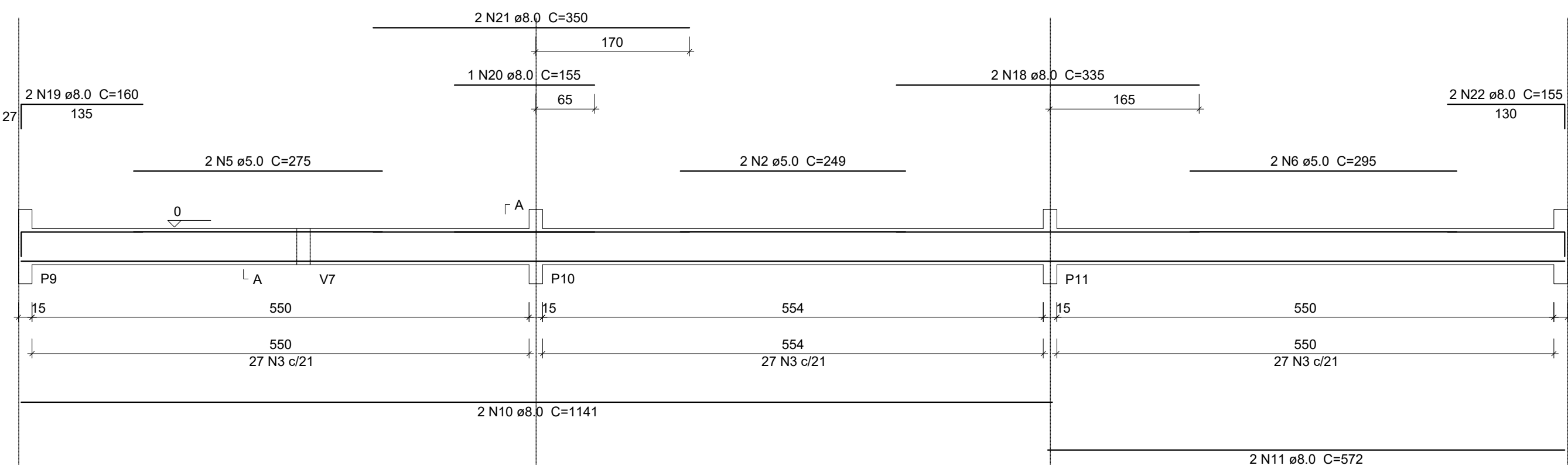


Resumo do aço

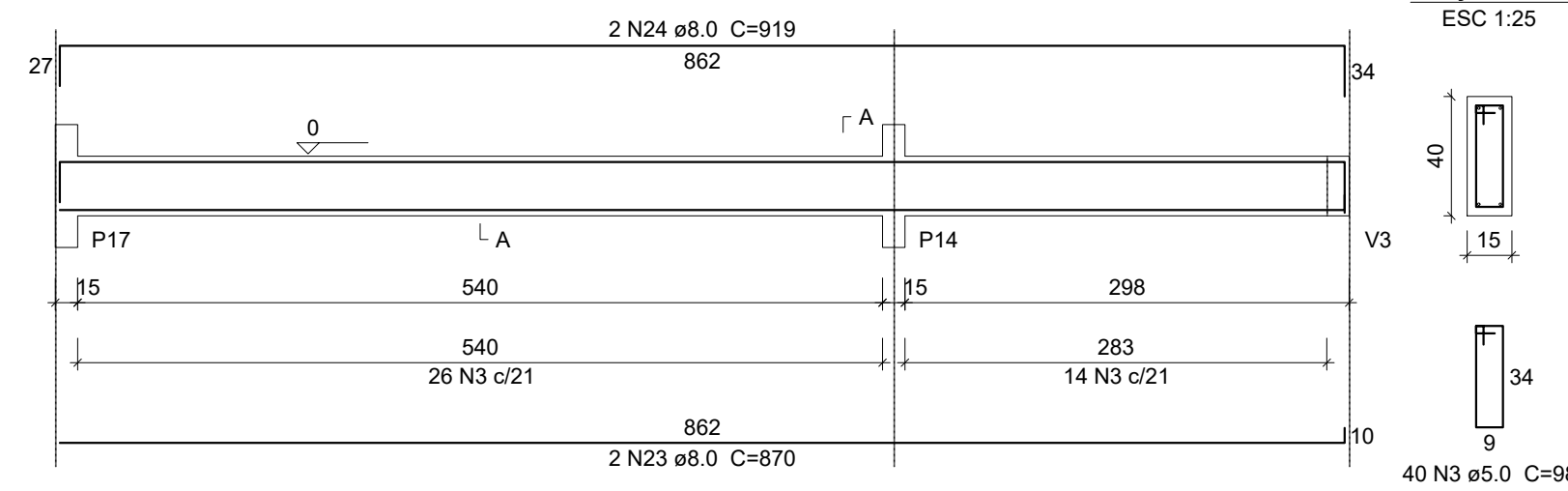
ACO	DIAM (mm)	C.TOTAL (m)	PESO (kg)
CA50	6.3	2.6	0.6
	8.0	404.6	159.6
	10.0	22.2	13.7
CA60	5.0	553.7	85.3
PESO TOTAL (kg)			
CA50		173.9	
CA60		85.3	

Volume de concreto (C=25) = 6.73 m³
Área de forma = 81.94 m²

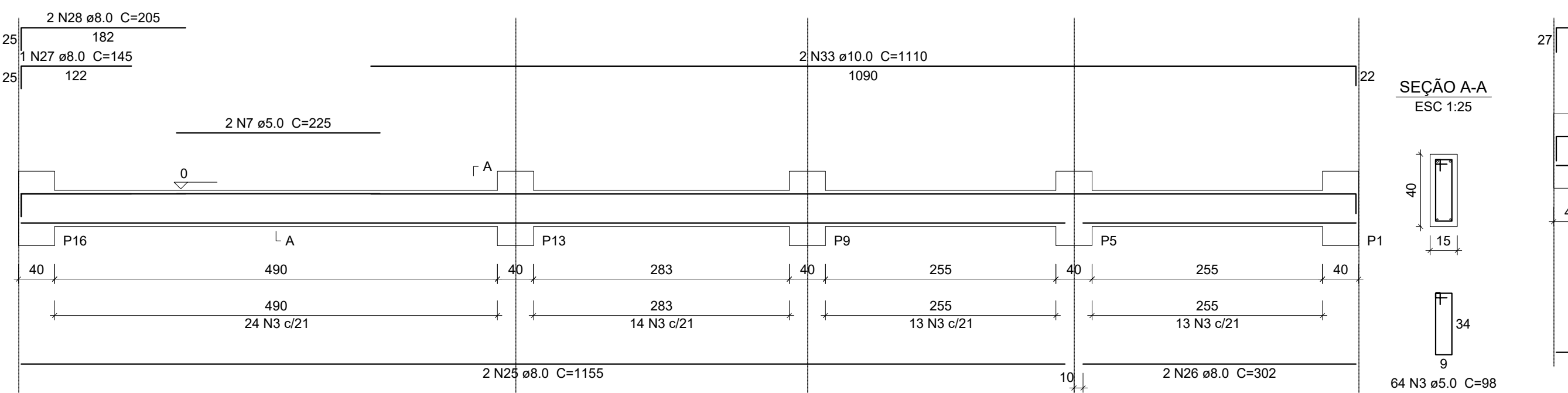
V3
ESC 1:50



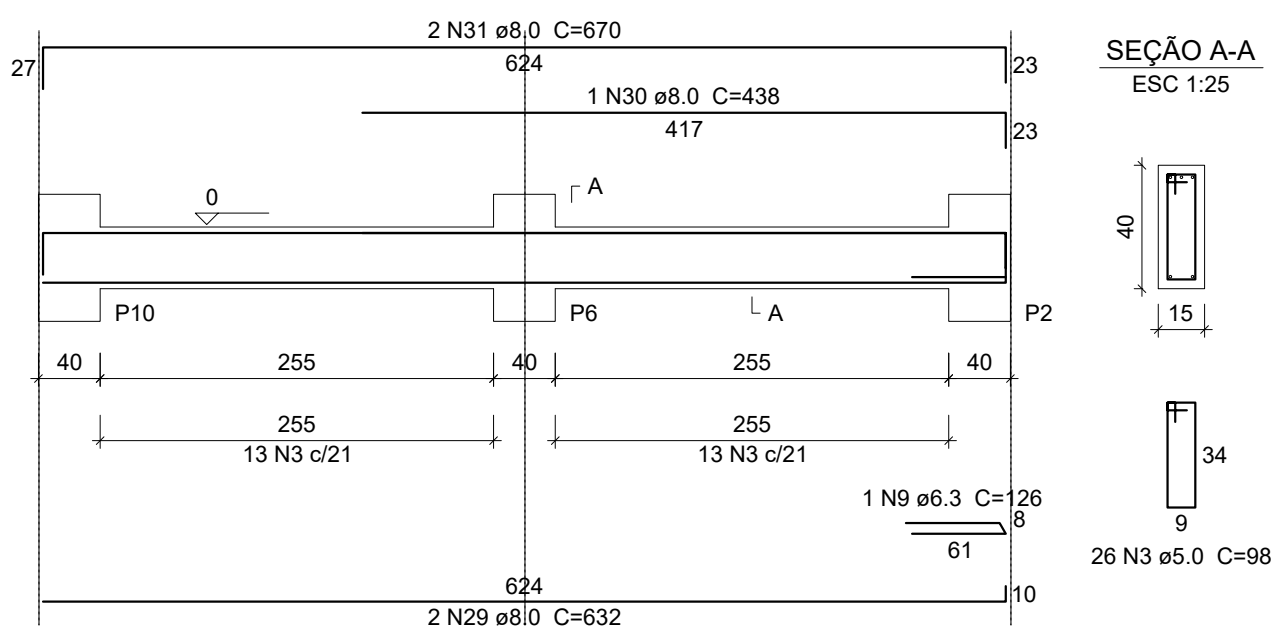
V7
ESC 1:50



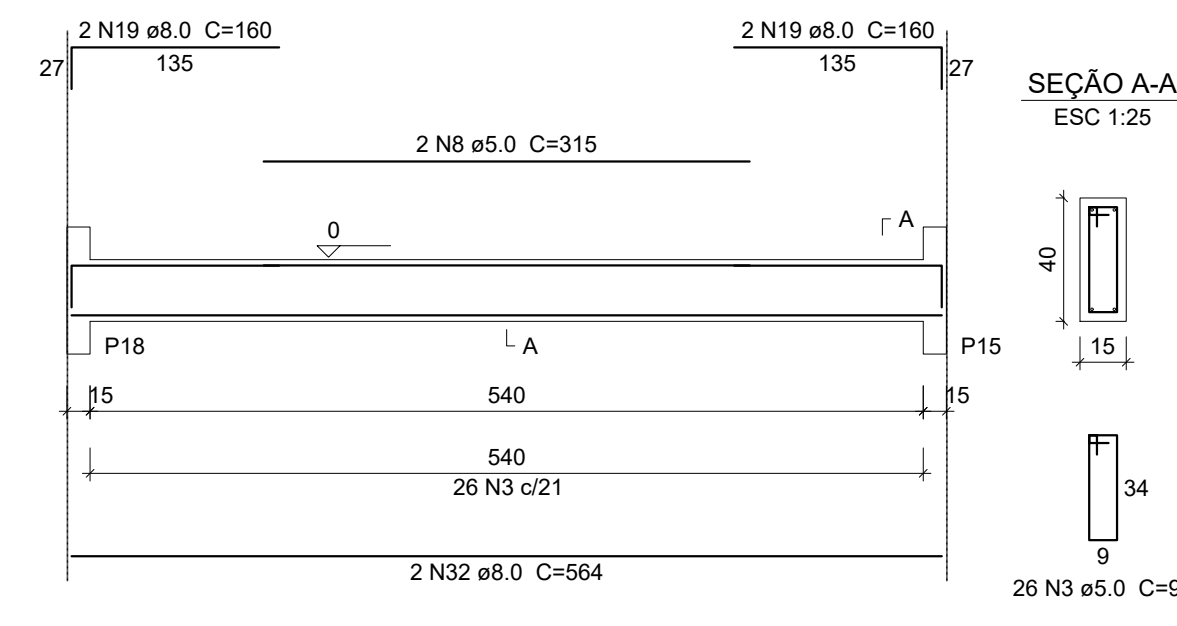
V6
ESC 1:50



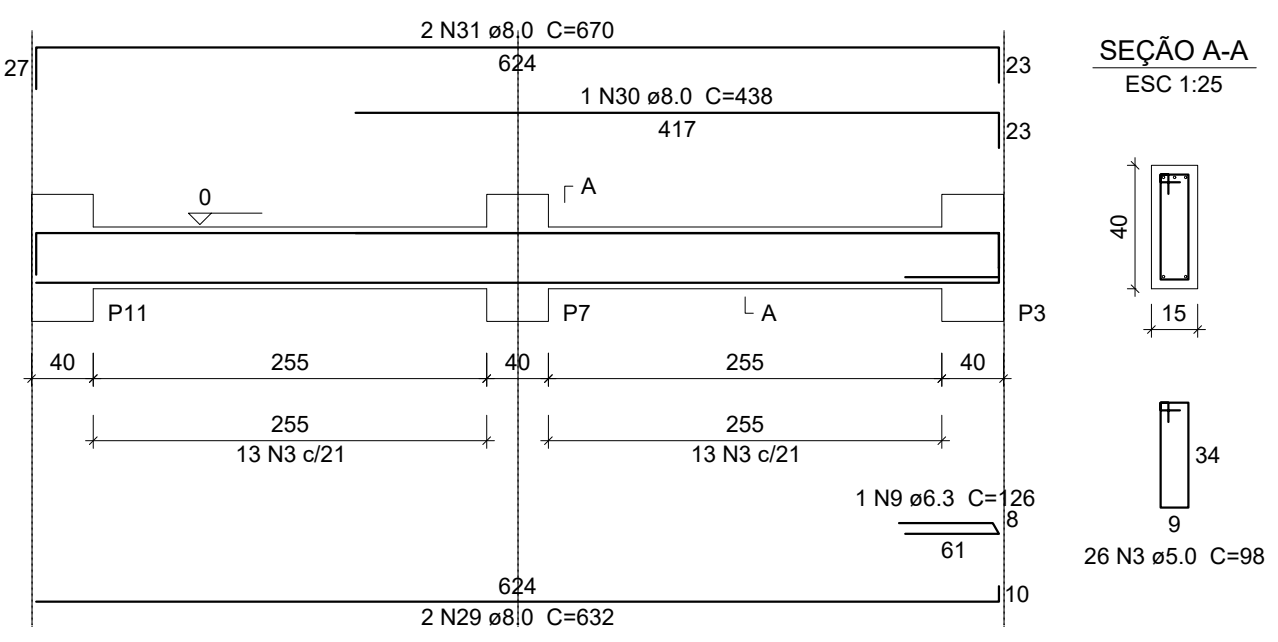
V8
ESC 1:50



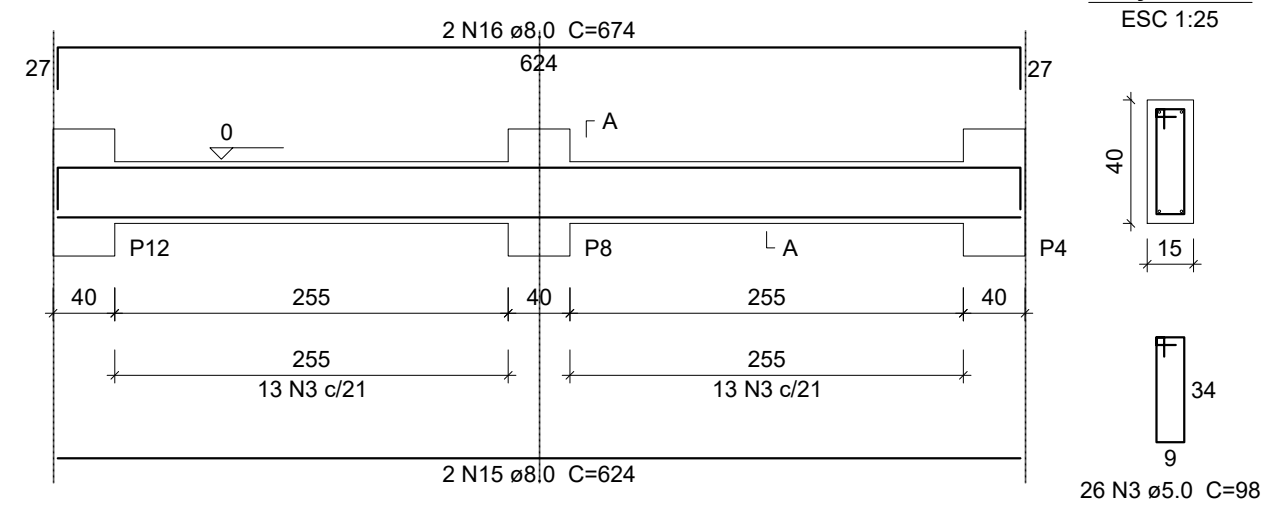
V9
ESC 1:50



V10
ESC 1:50



V11
ESC 1:50



DETALHAMENTO VIGAS - BALDRAME

VOLPI SOLUÇÕES MUNICIPAIS		VOLPI CONSULTORIA E ADMINISTRAÇÃO DE EMPRESAS LTDA Av. Barão do Rio Branco, 2679 (Edifício Stella Central) - Sala 509 Centro - Juiz de Fora - MG Fones: (32) 3233-2188 / (32) 9 8806-8543 - Email: volpi_consultoria@yahoo.com.br	
Contratante:		PREFEITURA MUNICIPAL PIRAÚBA/ MG	
Descrição:		CONSTRUÇÃO DE 04 SALAS, PÁTIO COBERTO, SANITÁRIO E SALA ADMINISTRATIVA NAS ESCOLAS MUNICIPAIS PROJETO ESTRUTURAL - DETALHAMENTO VIGAS - BALDRAME	
Assinatura do Responsável Técnico:	Desenho:	Escala:	Responsável pelo estabelecimento:
LEANDRO SANTANA DE SOUZA Engenheiro Civil CREA/MG - 193448/D	Leandro	Indicada	ADRIANO CARVALHAES GRAVINA Pfeiteiro Municipal
	Data:	Formato:	
	23/07/2021	A1	
		Prancha:	
		5/6	